

# DataSystem 7 geotechnical software

**ELE**  
International



**Accurate and repeatable test procedures**

**24 hour unsupervised logging**

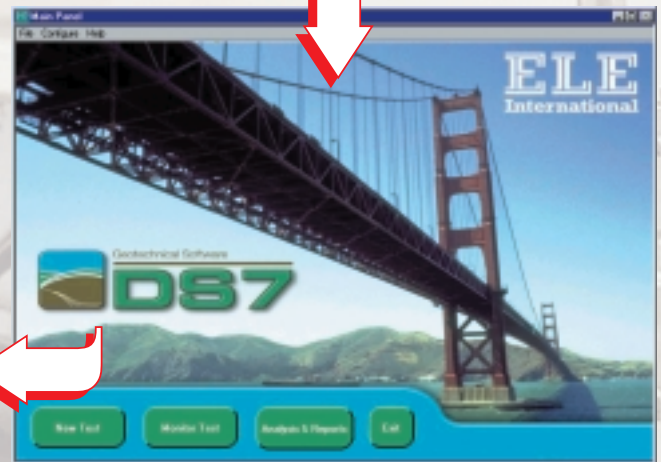
**Programs available for Triaxial, Consolidation, Shear and CBR tests**



**Eliminate the possibility of errors while taking manual readings**



**Automate your data logging using Windows-based software**



**ELE International is pleased to present a completely new suite of geotechnical data acquisition and analysis testing software. Compatible with Microsoft Windows 95, 98, 2000, NT and ME this new software replace the very successful and widely used DS6 range of programs.**

As standard the full range of programs is supplied at the time of purchase resident on a CD-ROM. The packages of software required are accessed by an activation code, supplied by ELE, allowing the customer to build up a suite of software on an 'as required' basis rather than purchasing the complete package of programs.

- **The software is selectable between British Standard, and ASTM/AASHTO Standards and tests can be performed in SI, imperial or metric units.**
- **Clear and easy to use; relevant test information is presented on a well laid out screen display**
- **Help screens for users**
- **Facility to enlarge on-screen transducer readings during test monitoring**
- **Real-time graphical outputs both to screen and printer as required during test**

Each package is user-friendly and guides the user through the test procedure.

A database is set up to store and manage completed test data, for analysis, reporting or for processing using other packages.

To take full advantage of the extensive analysis facility the package provides, Microsoft Word (Version 97 or later) should be resident on the system. This facility will allow reports to be generated automatically.

- **Machine set-up forms**
- **Sample identification form**
- **Test sequence forms, standard and user-defined**
- **Calibration sequence forms**
- **Short cut keys**
- **Communication and networking**
- **Data storage and File Formats**
- **AGS (Association of Geotechnical and Geoenvironmental Specialists) Data Exchange Format**

# DS7 Software

# Typical Test Screens

## Quick Undrained Triaxial Software

### **EL27-1750** Undrained Shear Strength in Triaxial Compression Software (Quick Undrained Triaxial - QUTXL)

**Single-stage includes:** BS1377: Part 7, cl 8;  
ASTM/AASHTO D2850-95, T296-94

**Multi-stage includes:** BS1377: Part 7, cl 9

## CU/CD Effective Stress Triaxial Software

### **EL27-1760** CU/CD Triaxial Compression Test Software

**CU includes:** BS1377: Part 8, cl 5, 6 and 7 and  
ASTM/AASHTO D4767-95 T297-94

**CD includes:** BS1377: Part 8, cl 5, 6 and 7.

## Triaxial Permeability Software

### **EL27-1765** Permeability in a Triaxial Cell Software (BS1377)

**Package includes:** Permeability in a Triaxial Cell  
BS1377: Part 6, clause 6.

## One-Dimensional Consolidation Software

### **EL27-1770** One-Dimensional Consolidation Software (Oedometer).

**Package includes:** BS1377: Part 5, cl 3  
ASTM/AASHTO D2435-96 T216-94

## ELE/Rowe-type (Hydraulic) Cell Consolidation Software

### **EL27-1780** ELE/Rowe-type (Hydraulic) Cell Consolidation Software (BS 1377)

**Package includes:**

Rowe cell consolidation with one-way vertical drainage  
BS 1377: Part 6, cl 3.5

Rowe cell consolidation with two-way vertical drainage  
BS 1377: Part 6, cl 4

Rowe cell consolidation with radial drainage outwards  
BS 1377: Part 6, cl 3.7

Rowe cell consolidation with radial drainage inwards  
BS 1377: Part 6, cl 3.8

## Direct/Residual Shear Software

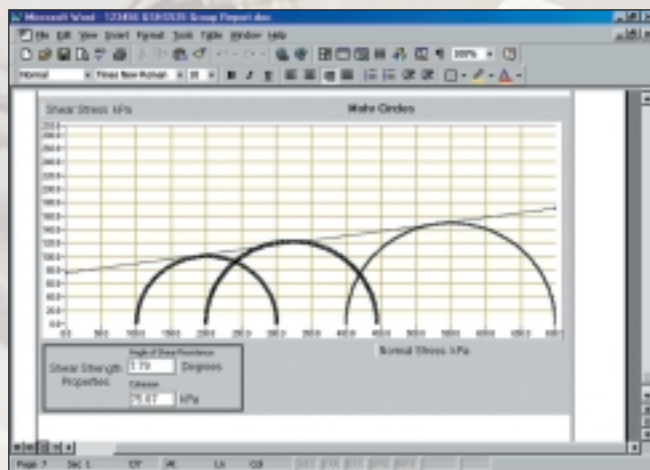
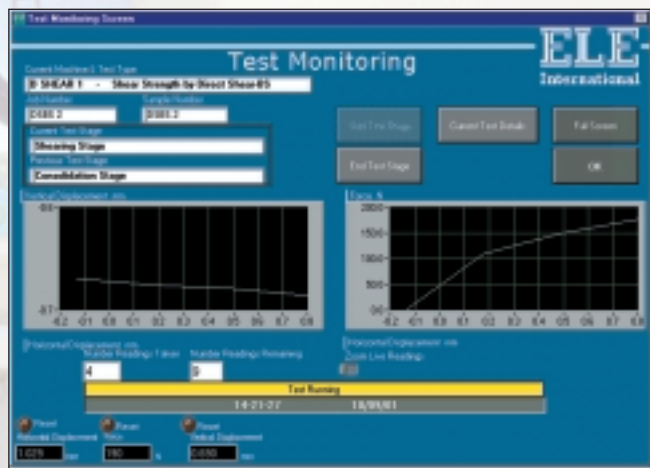
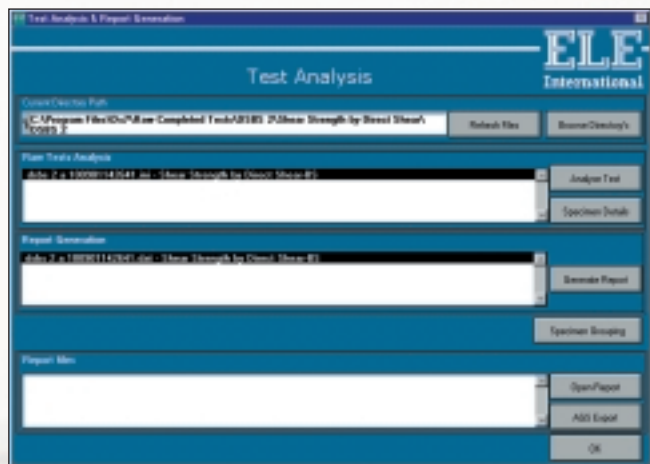
### **EL27-1790** Shear Strength by Direct and Residual Shear Software

**Package includes:** BS 1377: Part 7, cl 4  
ASTM/AASHTO D3080-98

## CBR Penetration Software

### **EL27-1795** California Bearing Ratio (CBR) Penetration Software

**Package includes:** BS1377: Part 4, cl 7  
ASTM/AASHTO D1883-99 D3668-78 T193-98



### Minimum PC system requirements

IBM-compatible PC, with a minimum of 50 Mbytes free hard disk space and 32 Mbyte RAM installed; 64 Mbyte RAM is recommended. Processor speed: 110 MHz or faster is recommended. Screen resolution: 800 x 600 or higher.

#### ELE International

Chartmoor Road, Chartwell Business Park,  
Leighton Buzzard, Beds, LU7 4WG, England  
Tel: +44 (0)1525 249 200  
Fax: +44 (0)1525 249 249  
e-mail: ele@eleint.co.uk  
http://www.ele.com

#### ELE International

PO Box 389, Loveland, CO 80539 USA  
Worldwide: +1 (970) 663-9780  
USA Tollfree: (800) 323-1242  
Fax: +1 (970) 663-9781  
e-mail: soiltest@eleusa.com  
http://www.eleusa.com